



Technical Rider

Version 1.3 / 05.02.2023



Le Singe
Untergasse 21, 2502 Biel

Content

General Information:	Page 1
Venue Overview:	Page 2
Sound:	Page 3
Backline:	Page 6
Lights:	Page 8

General Information

Venue: Le Singe
Location: Untergasse 21, 2502 Biel
Contact: info@kartellculturel.ch / +41 32 342 21 21

Max Capacity (standing):	230 spectators standing / 100 seated
Stage size:	6x3m
Stage height:	30cm
Height from stage to ceiling:	2.60m (no risers available)

Load in/out only possible over a small staircase.

Sound

FoH

1x Midas Pro2c

PA

1x Seeburg HDLM8 controller
1x LAB Gruppen FP10000Q amp
2x Seeburg K24 Top 90°x50° speaker mid/hi
4x Mach 181T speaker low
1x d&b L-317810 center

Monitor

3x L'acoustics LA24a amp
7x L'acoustics MTD112 wedge

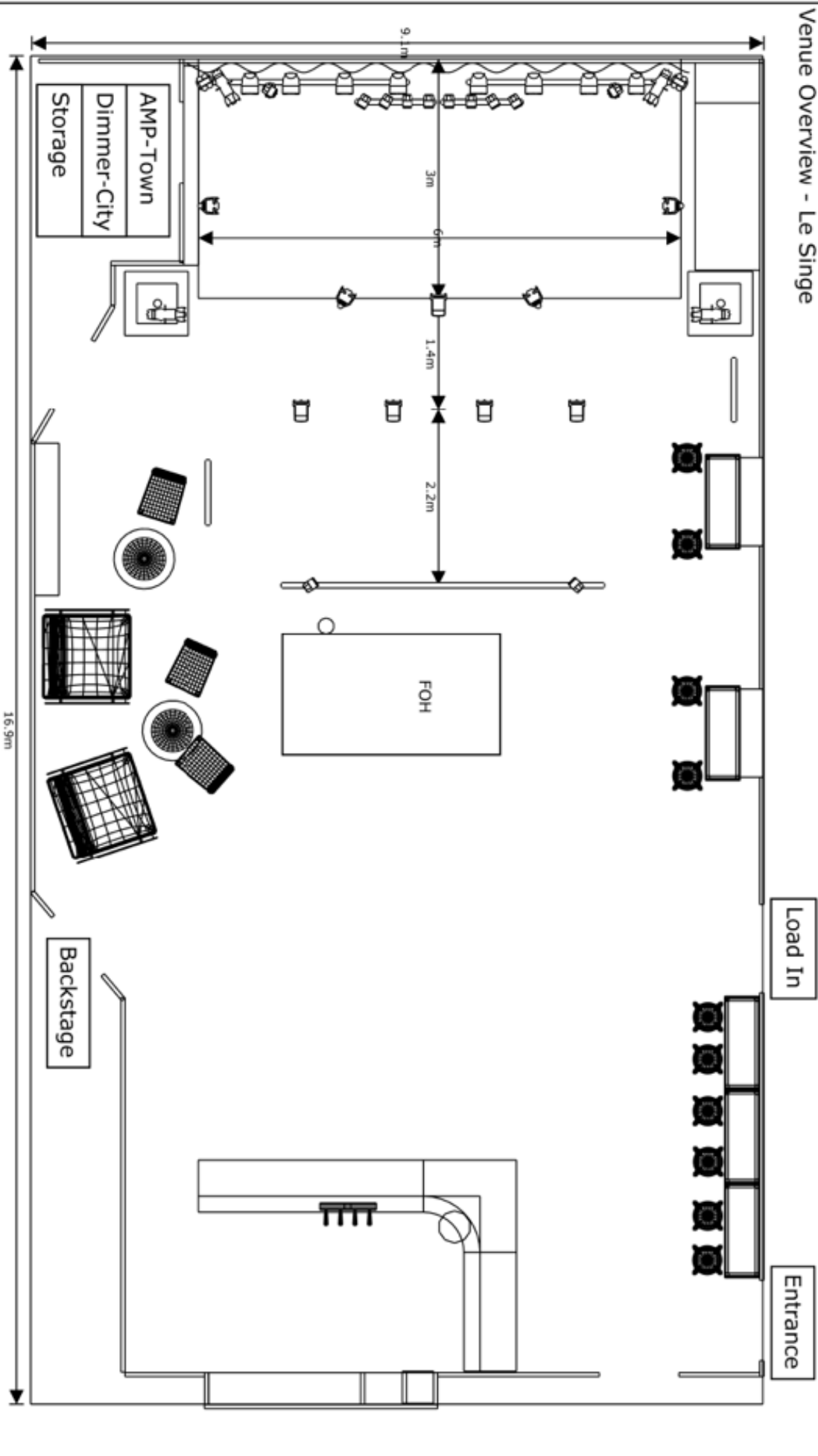
Recording System

1x Midas Pro2c

If you wish a multi-track recording, please contact us at least two weeks before your concert on our stage.

2 Transformer 230 V – 110 V

Venue Overview - Le Singe



Project Name
Le Singe
Location
Untergasse 21, 2502 Biel



Microphones

8x Shure	SM58/1x w/switch	dynamic
7x Shure	SM57	dynamic
1x Shure	Beta58A	dynamic
1x Shure	Beta52A	dynamic
2x Shure	Beta91A	condenser
1x Shure	SM7B	dynamic
2x SHURE	SLX-D Digital Wireless Pods: SM58 and Beta58	dynamic
2x Sennheiser	MD421U	dynamic
1x Sennheiser	MD504	dynamic w/clip eq. e604
6x Sennheiser	e604	dynamic w/clip
2x Sennheiser	e609	dynamic
2x Sennheiser	e906	dynamic
1x Neumann	KMS105	condenser
4x Neumann	TLM103	condenser
2x Neumann	KM184 matched Pair	condenser
1x AKG	D12	dynamic
1x AKG	P3 w/switch	dynamic
2x AKG	C451	condenser
2x AKG	C414B-ULS	condenser
2x AKG	C401 contact	condenser
1x AKG	D19 (Ringo's Snare mic)	dynamic
4x Electro Voice	RE20	dynamic
1x Electro Voice	DS35	dynamic
2x Oktava	MK-012 matched Pair	condenser
1x audio technica	ATM25	dynamic
2x Audix	f10	dynamic
2x t.Bone	RB-500 Ribbon	dynamic
2x sE	VR2 Ribbon	condenser
1x DPA	d:screet 4061 Omni	condenser w/clip
1x DPA	VO4099Lo (Lo-Sens)	condenser w/clip
2x DPA	VO4099T (Brass)	condenser w/clip
2x DPA	VO4099P (Piano Set)	condenser w/magnet

Additional clips 4099: 1x DoubleBass, 1x Cello, 2x Violin, 1x Acc.Guitar, 2x Clamp

All Microphone Stands

DI-Boxes

4x BSS	AR-133	active
4x Behringer	Ultra-DI	active
6x Tonkunst	DI-Box HR	passive
1x Radial	StageBug SB-4 Piezo	active

DJ Set

2x Technics Turntable	SL1210 MKII
1x Pioneer DJ Mixer	DJM 750
2x Pioneer CD Player	CDJ 1000

Backline

Drum

Sonor "Hi-Lite Signature Series"

2x Bass Drums 18", 22" and a Sonor 20" (not HiLite)
4x Rack Tom 08", 10", 12", 13"
2x Floor Tom 15", 16"

Snares

1x Yamaha (Metal) Power "V" Special 6"x14"
1x Premier (Wood) Original hand build in England 5"x14"

Cymbals all Paiste

2x Hi-Hat Formula602 14"
2x Dixie Medium Thin 14"
2x Crash/Ride 3000 Rude 18" Masters Dark 20"
4x Crash Mellow 16" Twenty Thin 17"
Full 18" Masters Dark 18"
5x Ride GiantBeat Thin 18" Masters Dark 20"
2000 20" Masters Thin 20"
Dry Heavy 22"

All Hardware and Carpet

Percussion

1Pair Conga 1x Quinto, 1x Conga, 1x Tumba
1Pair Bongo LP Generation II

1 LP Percussion Table with Tower

Bass Amp/Speaker

1x Ampeg SVT II Pro
1x SWR SM 400
1x Mesa/Boogie Bass 400+
1x Ampeg 8x10" cabinet
2x SWR 4x10" cabinet

Guitar Amp

1x Fender ' 65 Twin Reverb
1x Fender Deluxe Reverb
1x Fender the Twin Red Knob
1x Vox AC30
1x Roland JC 120

Double Bass

1x Fully Carved 3/4 Double Bass

„Johannes Rubner, Meisterwerkstatt für Kontrabässe Markneukirchen, 1975”

Scale length:	104,5cm
Pickup:	David Gage the Realist Copperhead
Strings:	Pirastro Obligato
Bridge:	adjustable
Under saddle:	adjustable

E-Bass/E-Guitar

1x Fender

Precision Bass

1x Fender

Stratocaster w/sync tremolo, custom body

Piano

1x Yamaha

G2

Keyboard/Stands

1x Nord Stage

2 HA88

3x Hercules Stands

EZ-Lok KS120B

1x Fender Rhodes

88 Keys Stage Piano

Lights

Patch:

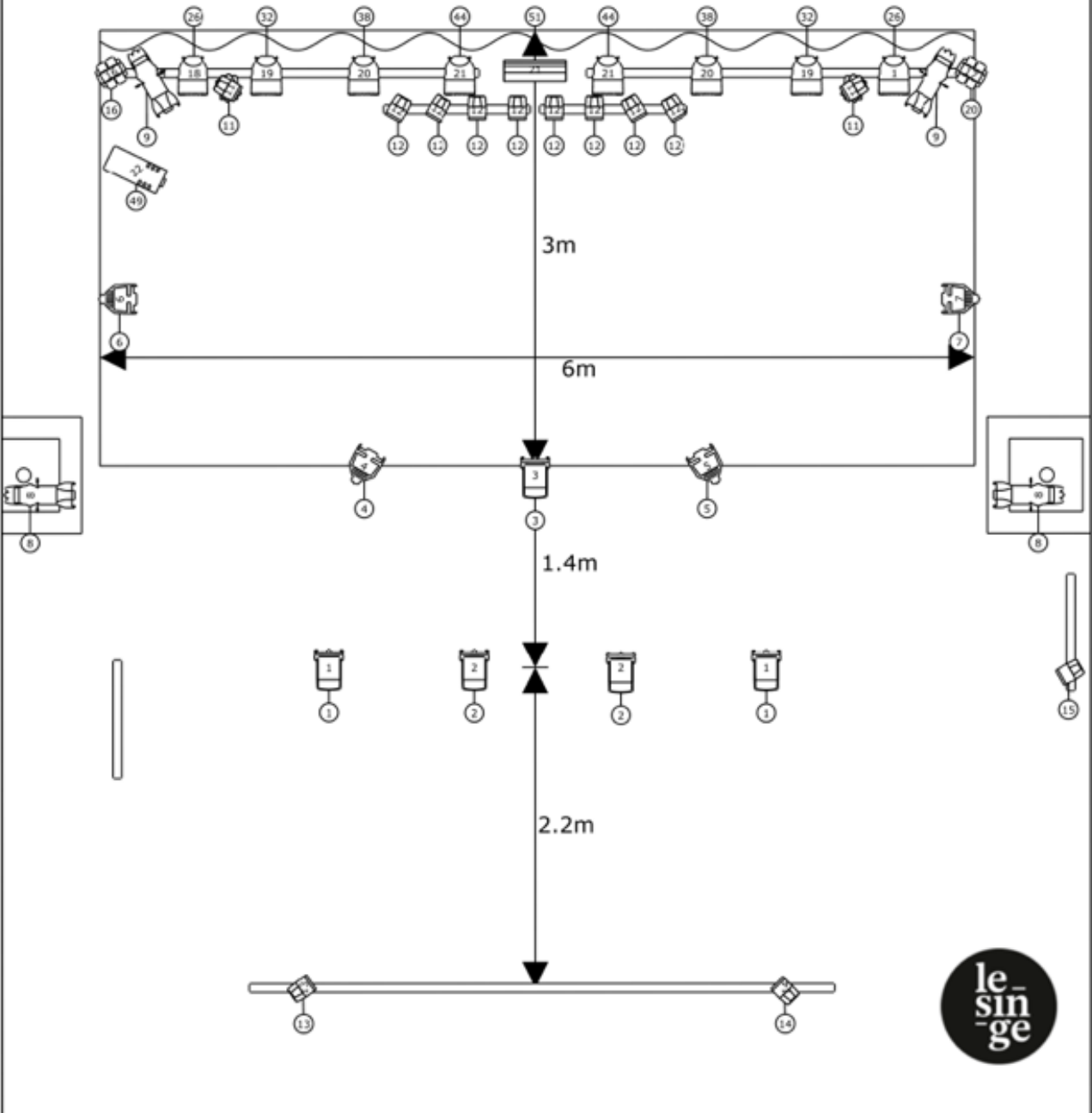
ID	Label	Fixture Type	DMX Address	Mode
1	Front Wide	2x 500W PC	1	8 Bit Dimmer
2	Front In	2x 500W PC	2	8 Bit Dimmer
3	Front Center	250W Floodlight	3	8 Bit Dimmer
4	Front SR	PARnel	4	8 Bit Dimmer
5	Front SL	PARnel	5	8 Bit Dimmer
6	Side Lights SR	PARnel	6	8 Bit Dimmer
7	Side Lights SL	PARnel	7	8 Bit Dimmer
8	Spotlights Front Sides	2x ETC S4 Jr. 25-50°	8	8 Bit Dimmer
9	Spotlights Back Sides	2x ETC S4 Jr. 25-50°	9	8 Bit Dimmer
10	Floor PARs	2x Floor PAR 64	10	8 Bit Dimmer
11	PAR 36 ACL vertical	6x PAR 36 Pin Spot	11	8 Bit Dimmer
12	PAR 36 ACL horizontal	8x PAR 36 Pin Spot	12	8 Bit Dimmer
13	PAR 36 mirrorball	PAR 36 Pin Spot	13	8 Bit Dimmer
14	PAR 36 mirrorball	PAR 36 Pin Spot	14	8 Bit Dimmer
15	PAR 36 mirrorball	PAR 36 Pin Spot	15	8 Bit Dimmer
16	Disco Effects SR	ADJ Quad Phase HP	16	4 Ch. Mod
17	Disco Effects SL	ADJ Quad Phase HP	20	4 Ch. Mod
18	2x LED PAR on Backdrop	Generic LED PAR	26	5 CH. (RGBWI)
19	2x LED PAR on Stage	Generic LED PAR	32	5 CH. (RGBWI)
20	2x LED PAR on Backdrop	Generic LED PAR	38	5 CH. (RGBWI)
21	2x LED PAR on Stage	Generic LED PAR	44	5 CH. (RGBWI)
22	Hazer	Hazer	49	2 Ch. Haze/Blower
23	Strobe	1500W Strobe	51	2 Ch. INT/Freq

FOH

1x MA Lightcommander

1x Laptop running Onyx for Playback Disco Light

Lightplot - Le Singe



Symbol Key

- | | | | |
|--|-----------------------------|--|---------------|
| | Par 36 (ACL) | | Quad Phase HP |
| | LED Par (RGBW) | | Hazer |
| | 500W Fresnel with Barndoors | | 1500W Strobe |
| | Source Four PARNel | | |
| | Source Four Jr Zoom 25°-50° | | |

Symbol Key

- Example
- | | |
|--|-------------|
| | Fixture ID |
| | DMX Address |

FOH Control

MA Lightcommander 24/6

Project Name
Le Singe

Standort
Untergasse 21, 2502 Biel